

BECOMING A



PARTNER

www.livelifepharmacy.com

P: (07) 5474 2166

PO Box 1240, Noosaville QLD 4566



OUR MISSION

"To care for and protect the health of our community."

CONSIDERING PARTNERSHIP?



Scan the QR Code or

[CLICK HERE](#)

LiveLife has assisted in making pharmacy ownership aspirations a reality for over 25 pharmacist partners in the last 15 years. If you have pharmacy ownership aspirations, please contact:

Clint Coker

B. Pharm, CEO, LiveLife Pharmacy

Ph: 0411 141 371

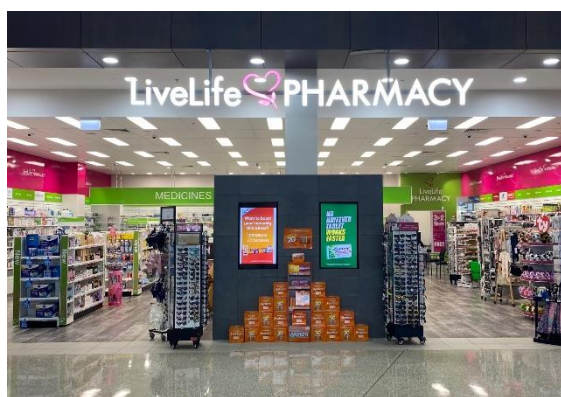
Email: clint.coker@livelifecentral.com

ABOUT LIVELIFE

First established in 1986, the LiveLife Pharmacy Network was developed with a desire to change the way pharmacies provided service to their communities. Where the majority of pharmacy models focused on the pharmacist being dispensary bound, checking prescriptions, and assistants giving most of the OTC medicines advice, LiveLife has focused on the opposite, with forward dispensing and ready access to our pharmacists.

Our forward pharmacy framework and policies promote all prescriptions and OTC symptom-based requests being dealt with by our pharmacists. We feel with this framework we are better able to connect with and help our communities. After all, it is our ultimate goal to leave our customers feeling cared for and supported.

Having started with just a couple of likeminded pharmacists, the LiveLife Pharmacy Network has continued to grow through young pharmacists partnering with existing, more experienced LiveLife partners.



With few exceptions, LiveLife partners work for some time within the group prior to partnership being offered. Many of the LiveLife partners started with their internship year. Not all pharmacists with ownership aspirations are future LiveLife partners, but those with the right professional skills and knowledge, the right attitude to customer and patient care, the focus on making a difference, and a strong work ethic are encouraged, trained, and mentored until they have the skills and confidence to become owner pharmacists.

Naturally, there are a lot of pharmacists working within LiveLife pharmacies who wish to work in a professional, patient-focused manner, but are not interested in pharmacy ownership. Their professional careers are fully encouraged and supported at LiveLife. The page 6 Career Progression Chart shows the many pharmacist career options available at LiveLife and is likely to expand further in the future.

The direction of the LiveLife Network is determined by consensus, guided by our mission and values.

LiveLife is not just any brand, it is a unique network of like-minded business partners who have worked hard to build professional, health-focused, and patient-centered pharmacies on the eastern seaboard of Australia.

Continue reading to find out what it truly means to be a LiveLife Pharmacist and what it would be like to work with us.

LIVELIFE REGIONS

Our pharmacies are located in some amazing locations including Whitsundays, Capricorn Coast, Port Douglas, Sunshine Coast & Noosa. See the below table for all the regions LiveLife Pharmacies are located.

Far North QLD	Whitsundays	Central Queensland
<ul style="list-style-type: none"> • Weipa • Port Douglas • Mossman • Mission Beach • Tully 	<ul style="list-style-type: none"> • Bowen • Airlie Beach • Cannonvale 	<ul style="list-style-type: none"> • Yeppoon • Keppel Bay • Cooeee Bay • Gracemere • Blackwater
Bundaberg	Sunshine Coast	Lockyer Valley & Greater Brisbane
<ul style="list-style-type: none"> • Agnes Water • Kepnock 	<ul style="list-style-type: none"> • Noosa • Cooroy • Peregian Springs • Birtinya 	<ul style="list-style-type: none"> • Laidley • Plainland



WORKING WITH US

WHAT IT MEANS TO BE A LIVELIFE PARTNER

LiveLife Partners are health experts and professionals. They are adaptable to changing situations and environments, approachable by staff and customers, calm under pressure, self-motivated, and growth-minded. They continually strive to develop their skills as leaders, whilst being receptive to other people and their environment.

LiveLife Partners have a huge impact on the culture and operations of LiveLife Pharmacies. Therefore, they must have a deep understanding of LiveLife as a whole, including its history, culture, values and mission, as well as the external environment which the pharmacies operate in.

We expect our leaders to “walk the talk” and lead by example. A LiveLife Partner’s actions must always be in alignment with the LiveLife **Mission, Culture, and Values.**

OUR MISSION

“To care for and protect the health of our community.”

LIVELIFE VALUES



Laugh and Enjoy
the Day



Inspire Others
Maintain a positive
attitude and work ethic

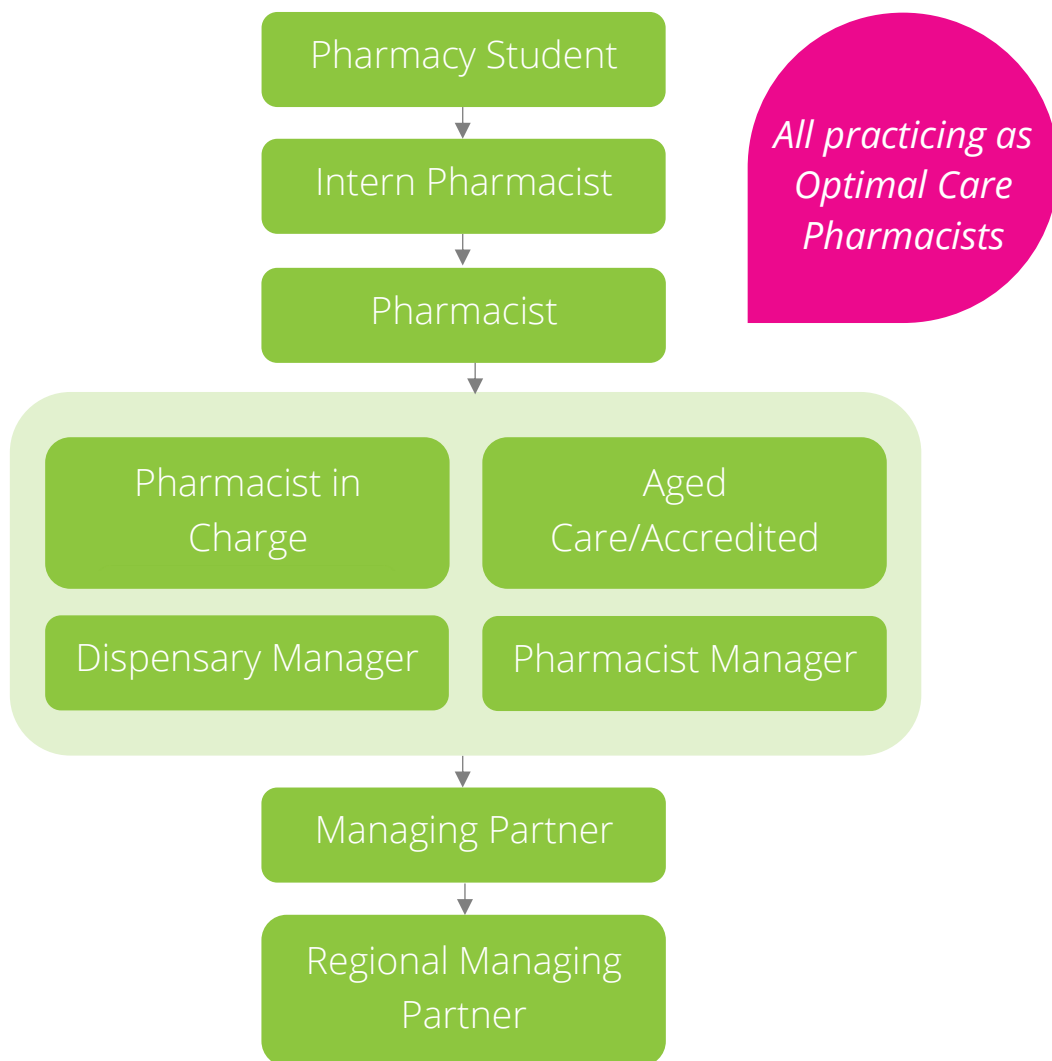


Fully Engage
Customers and Peers



Enrich Their
Day

POTENTIAL CAREER PROGRESSION CHART



Services/Roles Include:

UTI Consultations
Intern Preceptors
Vaccinations

Robotic Dispensing Management
Extended Scope of Practice (FNQ)
Community Engagement Presentations

Home Medicine Reviews
Hospital Services
Compounding

GENERAL CHARACTERISTICS OF SUCCESSFUL LEADERS

THINK STRATEGICALLY

- i. Ask questions
- ii. Think solutions



LOYALTY AND CONGENIALITY

- i. Consistency
- ii. Dependability
- iii. Friendliness



RESILIENCE

- i. How to better cope with stress/adversity
- ii. Communication – empathy in customer communications



EMOTIONAL INTELLIGENCE

- i. Self-awareness
- ii. discipline
- iii. Self-regulation (respond don't react)
- iv. Empathy
- v. Take responsibility
- vi. Who to go to for advice/assistance



COMMUNICATION

Respectful, empathetic, clear, and concise
(Listen more than you talk)

- i. With your team
- ii. With you peers
- iii. With suppliers and all stakeholders



INITIATIVE

- i. Do not wait to be told what to do to achieve goals
- ii. Be more efficient



CONSIDERING PARTNERSHIP?



Scan the QR Code or

CLICK HERE

 *Life... Let us help you Live it!*

www.livelifepharmacy.com